

Multiple Tooth Restorations

Procedure/Study by

Dr. Jack D. Griffin, Jr., DMD, MAGD

Composi-Tight™ 3D Clear 

CURE THROUGH
WedgeWands® 

SlickBands™ 

BlueView™
Pinch™ 

PerForm™ 



Multiple Tooth Restorations

By Jack D. Griffin, Jr., DMD, MAGD

Dr. Jack D Griffin is one of the most honored and awarded dentists in the country. Jack is one of a handful of dentists awarded Diplomat status by his peers with the American Board of Aesthetic Dentistry (ABAD), accreditation with the American Academy of Cosmetic Dentistry (AACD), and Mastership in the Academy of General Dentistry (AGD).

He considers it a great honor to have been asked to teach many dentists across the country how to meet their professional goals in various topics including practice management, digital photography, direct bonding techniques, cosmetic veneers, and CAD/CAM dentistry. He has lectured at many prestigious meetings and has been published in leading dental journals.

Jack graduated dental school from Southern Illinois University, where he received student dentistry awards and then went on to complete a general dentistry residency at the University of Louisville in Kentucky, with an emphasis in advanced dental care in restorative dentistry, emergency care, implants, oral surgery, and special patient care. Dr. Griffin began his dental practice in Eureka in 1988.

Case Study:

With multiple restorations in a quadrant, many practitioners will restore a single tooth at a time or every other tooth. It is often more difficult to place the subsequent matrices and so it is often more efficient to do all teeth at one time if possible. The ring and sectional systems from Garrison allow for predictable, broad and deep contacts with high efficiency. We are way past Tofflemire matrix holders and bulky retainers.

01

Quadrants of posterior composites worry dentists because of difficulty obtaining quality contacts, potential sensitivity, and placement efficiency. Rubber dam isolation was done for restorations in #12 through #15.

02

Initial access was done with a 330 carbide bur.

**03**

A caries indicator (Sable Seek, Ultradent) was used to help identify areas of affected dentin.

**04**

Decay was completely removed with a spoon and #6 round bur and a deep bevel was placed on all enamel for increased enamel etching surface and to blend the color of composite better with tooth.



05

After complete decay removal, a bio-regenerative liner (TheraCal, Bisco) was placed over the deepest parts of the preps to stimulate dentin repair and to decrease potential sensitivity.

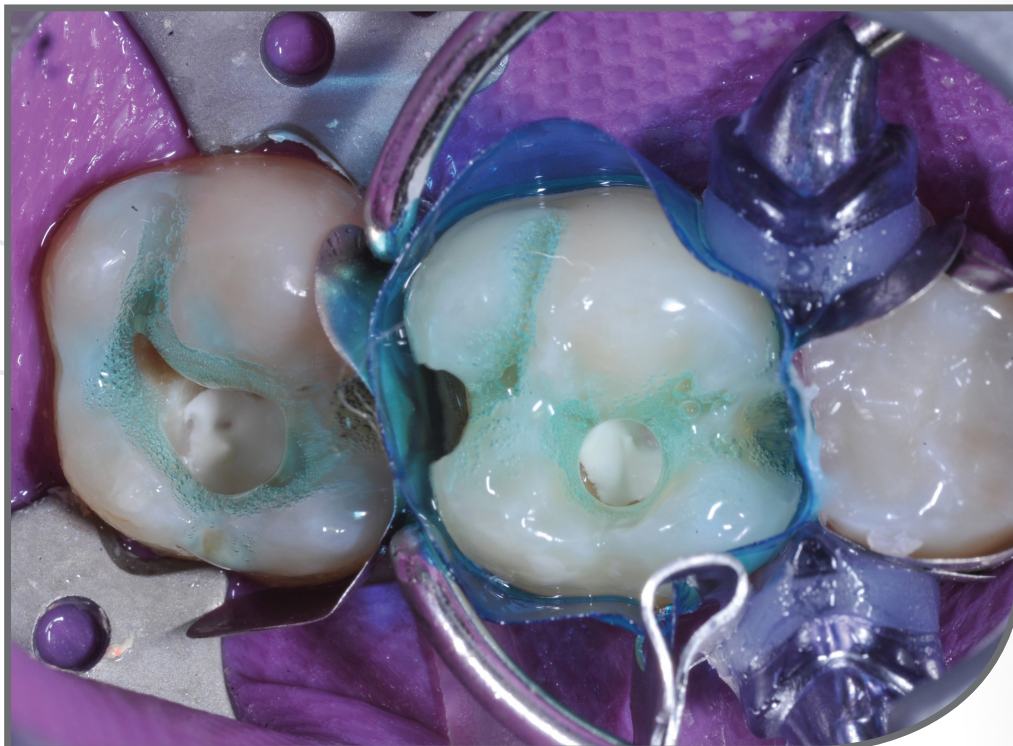


06

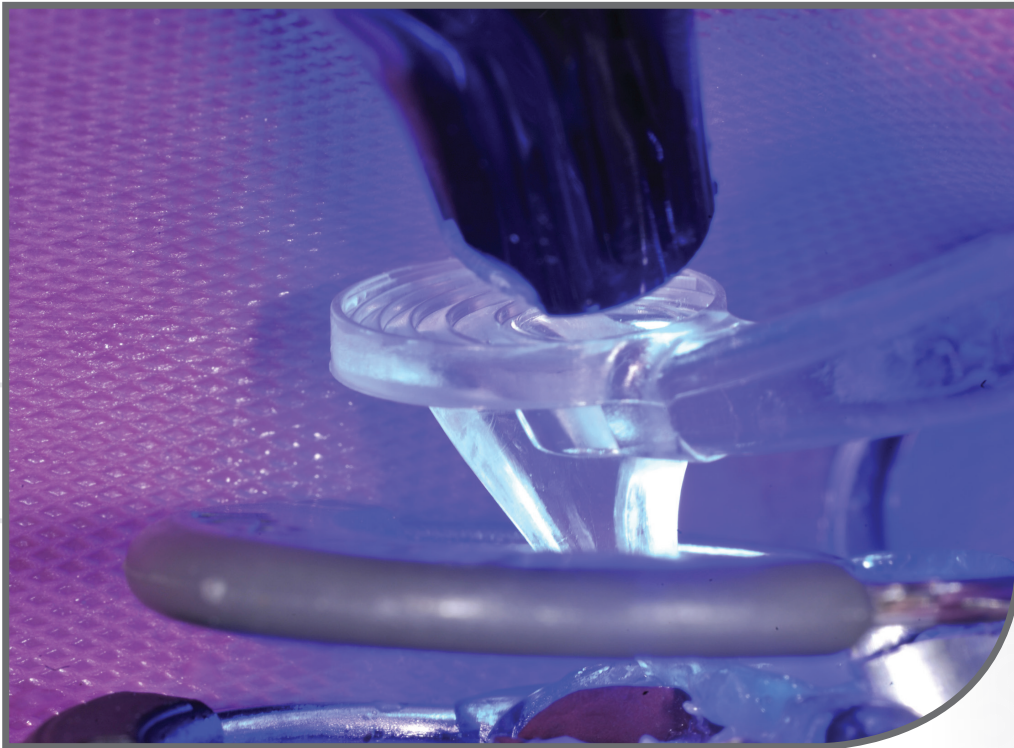
When there is less than 2mm of separation between the adjacent preparations, back-to-back restoring should be considered. In this case Pinch Matrices were placed on the first bicuspid and molar and tightened. These feature a blue mylar and an attached tension retainer that is "pinched" securing it to the tooth. Slick Band sectional matrices are then placed on adjacent restorations and held in place with wedges.

**07**

The two bicuspid are etched, rinsed, and dentin bonding agent placed followed by composite. The sectionals are left in place for molar filling.

**08**

The rings are removed from the bicuspid and 3D and G rings placed mesial and distal to the first molar. The molars are selectively etched, rinsed, and dentin bond agent placed.



09

To ensure a tight contact a bulk fill flowable was placed in one proximal box at a time and the mylar held against the adjacent tooth with a "PerForm" proximal contact instrument. This ensures that the contact is tight and well-formed while light curing though it.



10

The bulk fill flowable is covered with a microhybrid composite and all rings, matrices, and wedges removed. Shaping was done with round and pointed finishing burs.



11

The final result is an efficient placement of a full quadrant of composites. The rings and matrices from Garrison allow broad, deep, and dependable contact to be made simply.



Garrison
Dental Solutions

150 DeWitt Lane
Spring Lake, MI USA
49456
Toll free 888.437.0032

European office:
Carlstr. 50
52531 Uebach-Palenberg
Germany
Tel. +49 (0) 2451 971 409

www.garrisondental.com

CS-000-02-93