

Insert wedge. For optimal contour, gingival seal and tooth separation, use Garrison's *Wedge Wands™* or *G-Wedge™*. A high viscosity resin packed into the preparation will be trying to displace the band away from the tooth, so wedge firmly (Figure 2).

4.

3.

2.

1.

Place contoured sectional matrix band. Over-approximate tooth curvature by rolling the contoured band with your fingers (Figure 1). This will help keep the matrix band ends from interfering with G-Ring placement. The band should be oriented with the concave edge towards the occlusal margin of the tooth. Slide the band in place from the buccal or lingual side (placing occlusally may impede the band from dropping into place easily.)

Prepare tooth with conservative Class II preparation. Some separation between adjacent teeth is required to facilitate easy placement of the matrix band. If contact was not broken during tooth preparation, a G-Ring® may be used to create the necessary separation. After a few moments, remove the G-Ring and place the matrix band.

Place rubber dam. Isolation of the area helps to prevent contamination from blood and saliva. As with many dental procedures, aspiration of small parts is a valid concern.

Technique for Class II Restorations

Garrison
Dental Solutions

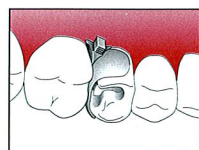


Figure 2

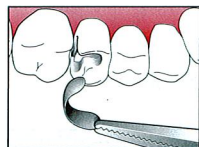


Figure 1

Garrison
Dental Solutions

616.842.2244
fax 616.842.2430

Spring Lake, MI USA 49456

Composi-Tight®
Sectional Matrix Systems
Obtain tight, anatomically-correct
contacts on posterior composite
restorations

Composi-Tight ●●

Composi-TightGold ●●

Composi-Tight ●●
Silver Plus

Instructions

Garrison
Dental Solutions

We put ideas
into practice.

1081r 1208

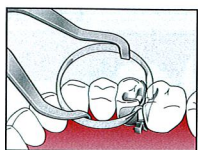


Figure 3

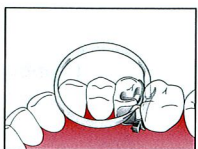


Figure 4

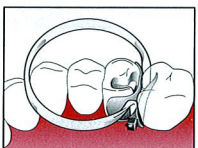


Figure 5

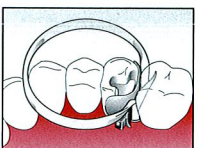


Figure 6

5. Apply G-Ring retainer.

For the Composi-Tight® Gold and Composi-Tight® Silver Plus

Spread the G-Ring with a Ring Placement Forceps* or a rubber dam clamp forceps and place over the band (Figure 3). Placement of the ring tines on top of the wedge provides adequate tooth separation for most conservative preparations (Figure 4). This placement will provide excellent buccal and lingual matrix band adaptation while providing significantly easier placement.

When using the *Original Composi-Tight® System*, and when additional tooth separation is necessary with Composi-Tight Gold and Silver Plus, place the ring tines between the matrix band and wedge (Figure 5).

For preparations where there is buccal or lingual extension, place the ring tines behind the wedge (Figure 6). This will prevent the ring tines from collapsing the matrix band into the preparation area.

*(Garrison part number MRDF-100, AUMRDF-100 and UNVF-100 Ring Placement Forceps will hold the rings more securely and provide ample force to open the rings. Some rubber dam clamp forceps may not open the G-Rings far enough to allow placement.)

- 6. Burnishing the band.** Very Important: Burnish the band against the adjacent tooth to make sure there is no spring-back of the band. This will ensure an excellent contact.
- 7. Use your preferred etching, disinfecting, and bonding technique.**
- 8. Apply your preferred composite resin.** Incrementally apply and cure the composite resin in 2mm thick applications to assure a full cure of the restoration.
- 9. Remove the G-Ring, wedge and band.** Because of the superior contact achieved with the Composi-Tight matrix systems, removal of the band requires a Band Placement and Removal forceps (Model #DF6-8), Howe Pliers or hemostat.
- 10. Contour and polish the restoration.**

Technique of M.O.D. Restorations

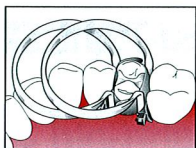


Figure 7

- 1. Prepare the tooth as in steps 1 and 2 above.**
- 2. Place and wedge two bands on both sides of the tooth being restored.**
- 3. Apply the G-Rings.** Place a ring with standard length tines on the mesial interproximal area. Secondly place a ring with long tines on the distal interproximal area (Figure 7).
- 4. Complete the procedure as outlined in steps 5-9 for Class II restorations above.**

Notes for multiple-tooth restorations:

- G-Rings with differing tine lengths may be used as outlined above for M.O.D. restorations.
- If back-to-back restorations are performed on adjacent teeth, one must be filled and cured first. Subsequently, the adjacent band may be burnished against the now hardened restoration to provide a tight contact.