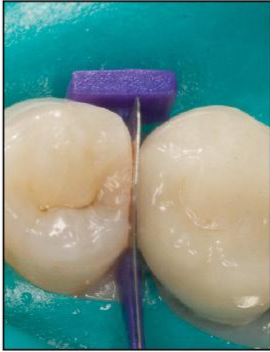


Clinical Tip



Place FenderWedge prior to preparation to pre-separate and protect the adjacent teeth.

The plastic wedge—not just the metal shield—should firmly engage the interproximal surfaces of the teeth. This will provide the optimum pre-separation force and hold the FenderWedge securely in place. (Figures 1 and 2)



Figure 3 clearly shows marks from the bur along the shield. Much better to have those on the shield than on the adjacent tooth!

Once the preparation is complete, remove the FenderWedge and place your matrix.



Dentistry and photos
courtesy of
Dr. Rob Ritter
Jupiter, Florida

Visit www.garrisondental.com
to see Dr. Ritter's full case
presentation.

