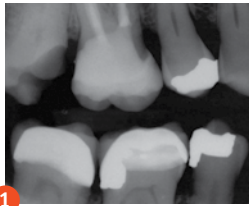


## Margin Elevation Technique *using Reel Matrix*

The margin elevation technique allows proper isolation and elevation of deep margin areas prior to restoring with an indirect partial coverage restoration (onlay). It can also be used for a first increment on direct, wide embrasure composites. The use of the Reel Matrix margin elevation band allows proper adaptation and seal of these deep areas so that a composite margin elevation can be performed. Step 1: Use the margin elevation technique shown in the case below. Step 2: Complete the restoration with either an onlay or large direct restoration.



Photos courtesy of  
Matthew Nejad, DDS  
Simi Valley, CA  
USA



1

Pre-op X-ray. Shows the margin location for #2 subgingivally prior to elevation.



The narrow design of the matrix shape has the ideal contour for adapting to and elevating deep margin areas. The light weight of the Reel Matrix spool allows it to stay in place during the procedure without tipping or falling off as would a heavily weighted traditional retainer.



2

Seat the margin elevation band subgingivally. The narrowness of the matrix will allow it to slide subgingivally and seal the margin efficiently.



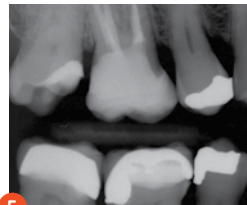
3

Seal the dentin and elevate the deep margin with restorative composite.



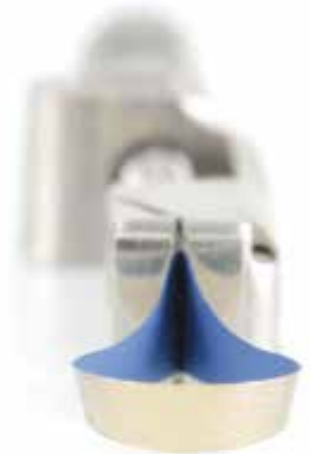
4

Remove the matrix and finish with a #12 blade to remove any flash. The deep margin has been relocated 1-2 mm supra-gingival for predictable isolation and delivery of an indirect bonded restoration.



5

Post-op X-ray. Shows the completed margin elevation prior to final restoration being completed.



The deep margin elevation technique is a useful non-surgical approach to treating deep localized margins.



A margin elevation matrix will give you the best gingival adaptation and contour for the deep margin areas. It is trimmed in height to allow improved adaptation to deep margin areas.

**Garrison**  
Dental Solutions