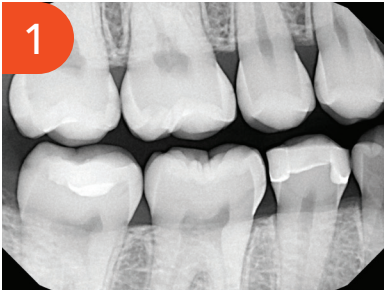


#2 MO and #3 DO Back-to-Back Restorations using the Garrison® Quad Matrix System™



Dr. Nick Romenesko completed his Bachelor of Science degree at Marquette University and graduated from Marquette School of Dentistry in 2009. After working for a year in Chicago, IL, he purchased his first practice in Brillion, Wisconsin, near Green Bay. In 2015, he obtained another practice in Brillion and merged it with his original practice. Dr. Nick enjoys focusing on delivering highly esthetic outcomes with his restorative skills and has focused on digital dentistry. He is a former board member of the Fox River Valley Dental Society, former member of the Tiletown Study Club (local branch of Seattle Study Club), member of American Dental Association, Wisconsin Dental Association and Manitowoc/Calumet County Dental Association.

#2 MO and #3 DO Back-to-Back Restorations using the Garrison® Quad Matrix System™



Preop radiograph #2 mesial caries and #3 distal caries



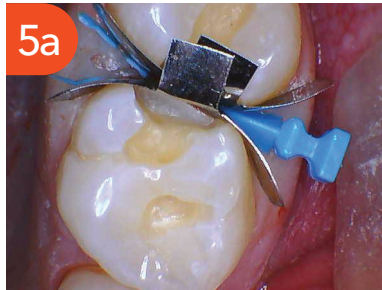
Preop #2



Preop #3



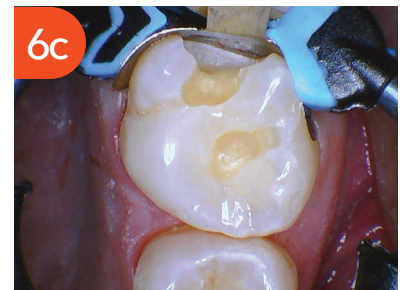
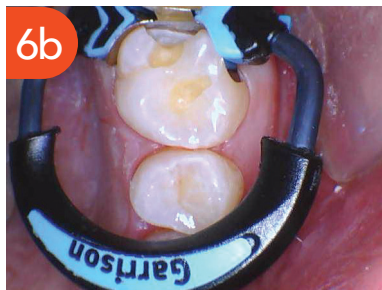
Prepped #2 and #3



5a Wedged and banded. Garrison® Firm Bands were selected to restore back-to-back to retain shape and contour and allow for burnishing to confidently form a firm interproximal contact. A small split wedge was selected as the spacing between the teeth in the box was tight. The wedge was placed so that the tips of the split wedge slide on each side of the papilla to maintain contact with the band, creating stability and a tight seal in the box when the Quad Matrix Ring is placed. It is best to place the wedge from the side of the tooth with the smaller embrasure so the wedge opens into the larger embrasure space. Typically this is from the buccal on the maxilla.



6a The driver tip on the Quad Matrix Ring is marked with the black arrow and is placed between the split wedge, adapting the wedge to have an intimate contact with the band to create a perfect seal on the walls of the box. The niti ring helps to create pressure to separate the teeth slightly, which will ensure a firm interproximal contact after the restoration is placed. After one tooth is restored, the neighboring prepped tooth has the contact burnished and restorative material is placed.



#2 MO and #3 DO Back-to-Back Restorations using the Garrison® Quad Matrix System™



This photo was taken immediately after the ring, wedge and bands were removed. Minimal flashing was left to minimize clean up and polishing, which also reduces the amount of tissue trauma for the patient.



Post op of #2 and #3. After trimming and polishing and occlusion is adjusted, the contours on the buccal and lingual maintain ideal shape, marginal ridges have a nice natural roll to them due to the shape of the Garrison band. Interproximal contact is firm.