

Contemporary Product Solutions

Review of ReelMatrix™

by Shannon Pace Brinker, CDA, CDD

Contemporary Product Solutions

ReelMatrix™ 

WedgeWands® 

Garrison
Dental Solutions



Contemporary Products Solutions Review of ReelMatrix

By Shannon Pace Brinker, CDA, CDD
Owner
Contemporary Product Solutions
Virginia Beach, Virginia

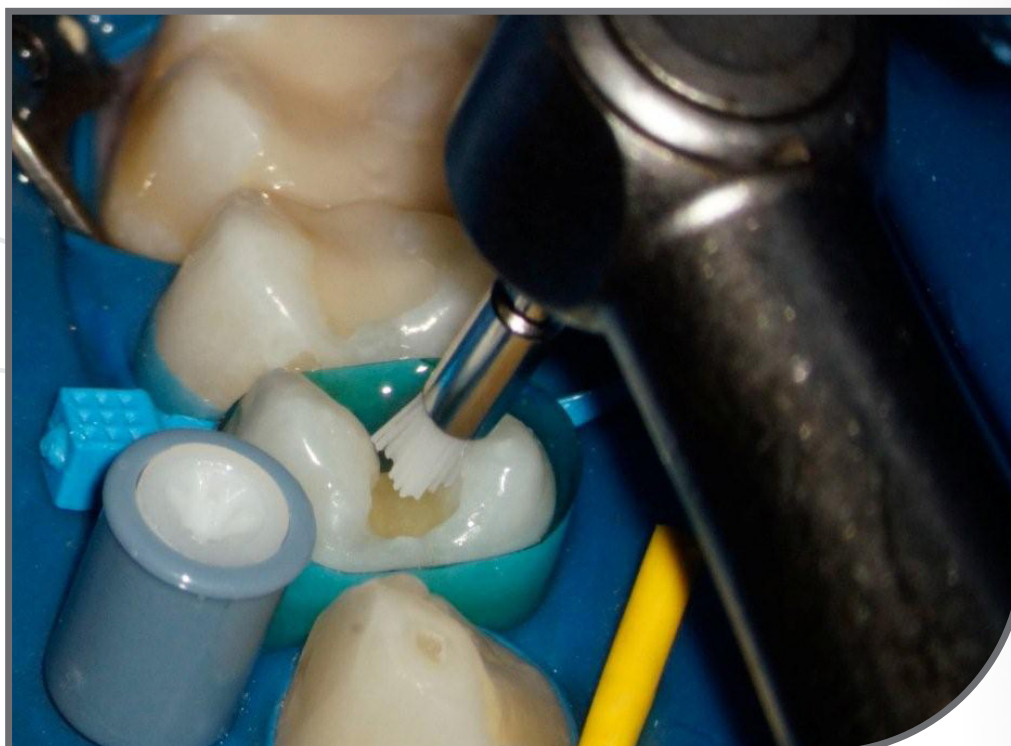
With the combination of the world's leaders in their field, Contemporary Product Solutions' dexterous, knowledgeable and experienced leadership team maintains a sharp eye for emerging products in the field of general and restorative dentistry by providing a "Total Office" perspective of clinical information and application, incorporating photographs and videos to assist chairside procedures for better patient results. CPS (cpsmagazine.com) will continue to evaluate one product at a time with professionalism, integrity and a commitment to excellence.

The CPS Evaluation Team combined product review consists of dentists, assistants, hygienists, patient coordinators and the dental laboratory. CPS produced the following comments and reviews following its evaluation.



01

Use the handle of the ReelMatrix to position the matrix above the tooth and place it. Place the Wedge Wand to seal the gingival margins.



02

Clean the prep with an Ultradent Starbrush.



03

Occlusal view of preparation.



04

Place acid etch for 15 seconds and rinse.

05



Brush on bonding agent Futurabond by Voco.

06



Cure bonding resin.



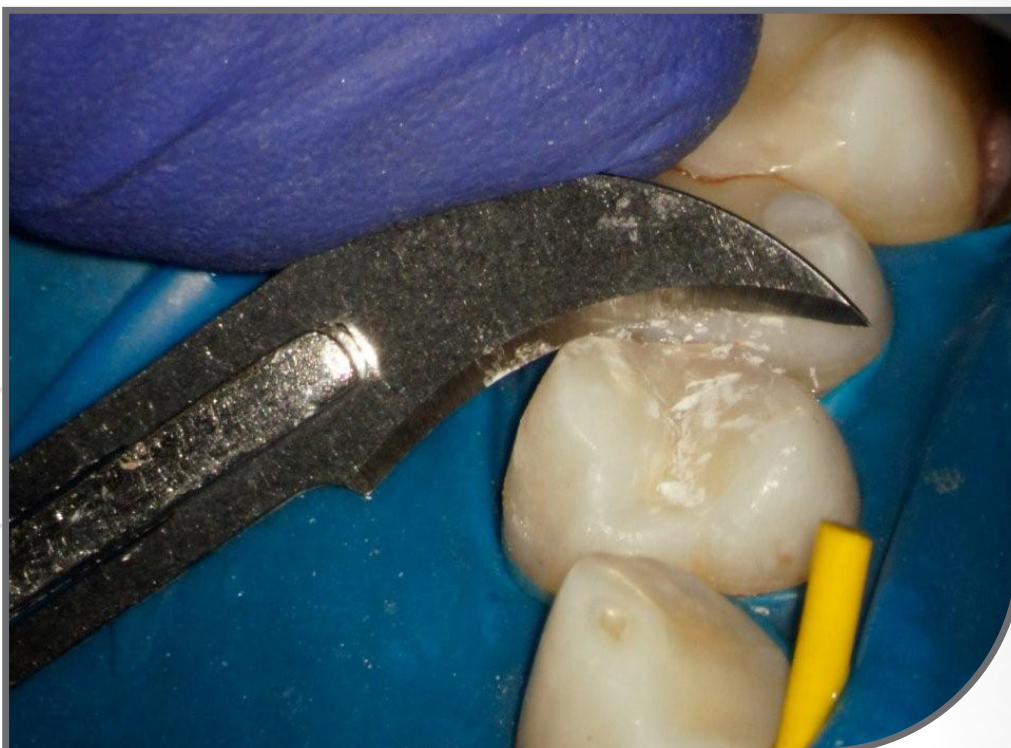
07

Place flowable composite G-aenial Universal Flo and cure.



08

Place direct composite Venus by Heraeus and cure.



09

Use a 12 blade to help with contours.



10

Final restoration being polished.

Dentist Comments

- "Improved the overall contour of large MO or DO restorations and allowed better control of MOD restorations."
- "The cure-through bands didn't have the strength to go through tight contacts on the unprepped side of the tooth, same with the dead-soft, I kept scrunching them trying to get them to seat."
- "The ease of placement...I had a lot more freedom in moving the matrix around the tooth in case I had a large buccal area that needed to be restored...plus the cinching device was super easy and foolproof."

Assistants Comments

- "I felt it was very easy to handle without any assistance. I liked the easy grip handle and also with a little click it let go and I could continue on with the restoration."
- "Easy placement, variety, loved the different sizes of wedges."
- "Cure-though matrix and the delivery system (handle)."

Description

The ReelMatrix is a matrix system with instruments and matrices for every posterior procedure. The reels pop into the handle and Press the reel into the handle and retract the grippers to lock the reel in place. The matrices are pre-contoured in three dimensions and when combined with anatomical wedges and separator rings.

Instructions

The manufacturer's instructions were included in the package along with sample sizes for patients to evaluate.

Packaging

The ReelMatrix comes with 60 matrices (10 each size), 1 tensioning instrument and 4 different size Wedge Wands.

Clinical Indication

ReelMatrix uses a pre-contoured Tofflemire-style matrix band coupled with an applicator handle for Direct composite and Amalgam placement.

Evaluation Team Feedback

With a review from 25 evaluation team members and used on 218 patients, the ReelMatrix by Garrison Dental Solutions was welcomed with open arms to all the dental assistants who used it.

"Remarkably efficient design! The ease of use of the ReelMatrix will speed up your placement of large restorations and core buildups."

~Dr. Dory Stutman

"Easier to place wedges than when you have a matrix holder in place."

~Dr. Jeff Huisman and Team

"Improved the overall contour of large MO or DO restorations and allowed better control of MOD restorations."

~Mickey Bernstein and Team



Garrison
Dental Solutions

150 DeWitt Lane
Spring Lake, MI USA
49456
Toll free 888.437.0032

European office:
Carlstr. 50
52531 Uebach-Palenberg
Germany
Tel. +49 (0) 2451 971 409

www.garrisondental.com

CS-000-02-93